

**2019 CURRENT CONDITION REPORT**

**Wesquage Pond  
Narragansett, Rhode Island**



**Prepared July 2019  
By  
Scott Ruhren  
Senior Director of Conservation  
Audubon Society of Rhode Island**

**Author's Signature:** *Scott Ruhren*

**Date:** *11/8/19*

**Introduction:**

As part of an annual commitment toward monitoring and evaluation of refuges, this document summarizes conditions observed at Wesquage Pond Wildlife Refuge observed on June 26, 2019.

Complete property details are contained in the 2018 Current Condition Report in the Appendix.

**General Description:**

Wesquage Pond is a 65-acre ± barrier pond located within the Bonnet Shores Fire District. The Wesquage Pond Wildlife Refuge was acquired in five tracts and consists of most of Wesquage Pond as well as vacant lots north of the pond.

**Disclaimer:**

The observations and monitoring notes from June 26, 2019 summarized here, represent visible conditions. It is possible that some features will have been undetected because of vegetation or other conditions.

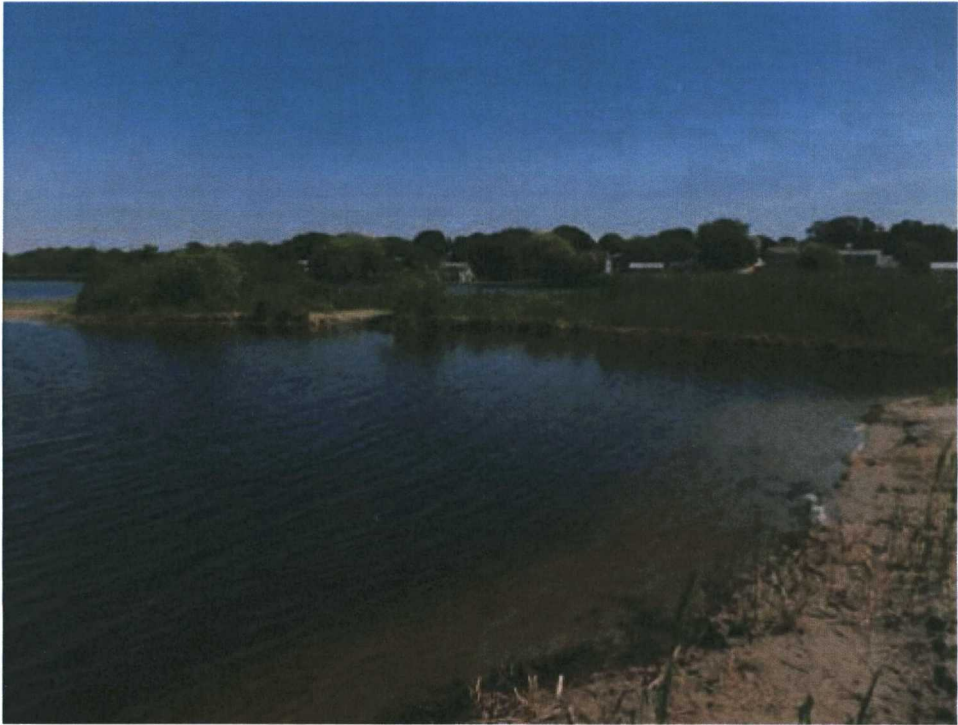
Parcels were monitored to the best of my ability using existing maps (Appendix Figure 3). Many of the northern parcels are disjunct and were platted as “paper lots” but never developed. Still, procedures were replicated from the 2018 monitoring summarized in the 2018 Current Condition Report.

**Observations:**

After walking most perimeters and driving some—where walking was not safe—I could not detect negative changes to refuge conditions since the prior monitoring in 2018 (Appendix). There were no obvious human activities such as trails, dumping of inorganic matter or piles of yard waste. In fact, the wooded thicket and small woodland on the northeast corner of Wesquage Pond looked better than 2018 where we detected some yard waste and small human trails just beyond the end of Lake Street.

Six predated turtle nests were detected in the raised sandy shore along the rip-rap edge of the Wesquage Pond inlet. I reported this observation to RI Department of Wildlife Management Wildlife Biology program, tracking Rhode Island’s reptiles and amphibians.

**Photograph 1.** Looking east from connection of Wesquage Pond with main channel flowing in and out of the pond. Wesquage Pond Wildlife Refuge, Narragansett, RI, June 26, 2019 (Photographer: Scott Ruhren)



**Photograph 2.** Looking north along channel connecting Wesquage Pond to Narragansett Bay. Note hardened bank and sandy trail where turtle nest sites were detected. Wesquage Pond Wildlife Refuge, Narragansett, RI, June 26, 2019 (Photographer: Scott Ruhren)





**Photograph 3.** Looking east on Lake ST at northeast corner of Wesquage Pond. Audubon property to the south. Wesquage Pond Wildlife Refuge, Narragansett, RI, June 26, 2019 (Photographer: Scott Ruhren)



**Photograph 4.** Looking southwest at last house on the Lake ST shore of Wesquage Pond. Audubon land is in the foreground. Wesquage Pond Wildlife Refuge, Narragansett, RI, June 26, 2019 (Photographer: Scott Ruhren)

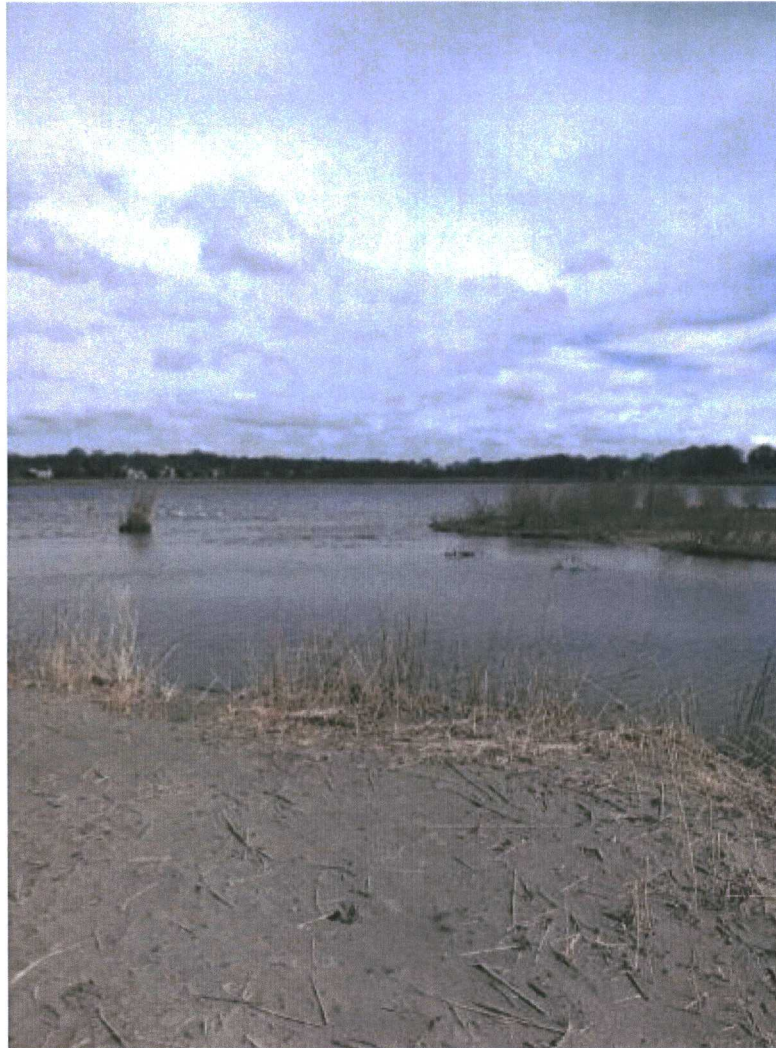




# APPENDIX

**2018 CURRENT CONDITION REPORT**

**Wesquage Pond  
Narragansett, Rhode Island**



**Prepared April 2018  
By  
Kyle R. Hess  
Conservation Assistant  
Audubon Society of Rhode Island**

**Author's Signature:**



# CURRENT CONDITION REPORT

## Table of Contents Wesquage Pond Narragansett, Rhode Island

Cover Page	1
Table of Contents	2
Background Information	3
Figure 1A. Town of Narragansett Tax Assessor's Map	7
Figure 1B. Town of Narragansett Tax Assessor's Map	8
Figure 2. Aerial Photo / Property Map	9
Figure 3. Landscape Context Map	10
Figure 4. USGS Topo Map	11
Figure 5. Photo Points Map	12
Photographs	13

## **CURRENT CONDITION REPORT**

### **Background Information Wesquage Pond Narragansett, Rhode Island**

#### **Current Land Owner:**

Audubon Society of Rhode Island

#### **Location of Protected Property:**

Street Address:  
Municipality: Narragansett  
County: Washington  
State: Rhode Island

#### **Plat/Lot Information:**

Town of Narragansett Tax Assessor's Plat NR, Lots 22-24, 26, 28, 30, 206, 208, 210, 211, 213, 216, 218, 227, 230, 232, 234, 236, 239, 244, 246, 248, 250, 256A, 536, 573, 724, 734, 872, 911, 921, 936, 938, 940, 943, 946, 948, 970, and 973 (Figure 1A).

Town of Narragansett Tax Assessor's Plat NS, Lots 112 and 112A (Figure 1B).

#### **Acreage:**

81.5 acres ±

#### **Introduction:**

This document is a description of land owned by the Audubon Society of Rhode Island. This report describes in general terms the vegetation and wildlife observed on the property during a survey conducted on April 18, 2018.

#### **General Description:**

Wesquage Pond is a 65 acre ± barrier pond located within the Bonnet Shores Fire District. The Wesquage Pond refuge was acquired in five tracts and consists of most of Wesquage Pond as well as vacant lots N of the pond.



The Belton Tract, Parcel 1 was donated to the Audubon Society of Rhode Island on September 2, 1971 by the Belton Corporation. Included in the deed were specific restrictions to housing development on the land adjacent to the pond (see deed for detail).

The Belton Tract, Parcel 2 was donated to the Audubon Society of Rhode Island on December 18, 1974 by the Belton Corporation with no legal restrictions (see deed for detail).

The combined acreage of the Belton Tract parcels is 68 acres ±.

The Cardi Tract was donated to the Audubon Society of Rhode Island on December 22, 1993 by Roland (Ron) P. Cardi, Nicholas Cardi, Jr., Peter D. Cardi, Arthur Zompa, and Sandra Zompa. This tract consists of vacant house lots to the NW of Wesquage Pond and totals 9.2 acres ±. There are no legal restrictions stated in the deed (see deed for detail).

The Corona Tract was donated to the Audubon Society of Rhode Island on December 20, 1984 with no restrictions stated in the deed. This tract totals 3.23 acres ±.

The Francisco Tract was donated to the Audubon Society of Rhode Island on December 21, 1981 by Mary V. Francisco. There was some confusion regarding Mrs. Francisco's ownership of this parcel due to her husband, Pasco Francisco, being the only name on the deed. According to ASRI records, the Francisco's assumed that the entirety of Mr. Francisco's estate would be transferred to Mrs. Francisco and no challenges had been made to the will (see Property Record Form filed at ASRI headquarters, Smithfield, RI). The Francisco tract totals 0.1 acres ±.

### **Topography and Hydrology**

Elevations of the Wesquage Pond refuge range from approximately sea level to 50 feet above sea level. The highest elevations are found at the NW of the property at the end of Clara Lane and Lily Lane. The landscape slopes downward from approximately W to E to Wesquage Pond and then rise to the E again. The lowest elevations are found to the SE at Wesquage Pond (Figure 4).

Two unnamed streams run through the property from approximately NW to SE, join to the NW of Wesquage Pond, and connect to the pond at Lake Road (Figure 2 and Figure 4).

### **Vegetation and Wildlife Value**

The species listing below is only a partial list to provide a baseline of the more common species present at the time of this survey. The property likely supports diverse flora and fauna throughout the year not observed during these surveys.

**Table 1.** Vegetation observed on the Wesquage Pond refuge on April 18, 2018. (Species in **bold** are listed as invasive by the USDA National Invasive Species Information Center (NISIC)<sup>1</sup> and/or are listed in the Invasive Plant Atlas of New England<sup>2</sup>).

#### **A. Vegetation**

---

<sup>1</sup>USDA National Invasive Species Information Center (NISIC) Gateway to invasive species information; covering Federal, State, local, and international sources. <https://www.invasivespeciesinfo.gov/index.shtml>

<sup>2</sup> Invasive Plant Atlas of New England (IPANE): <https://www.eddmaps.org/ipane/>

<u>Common Name</u>	<u>Scientific Name</u>
American trout-lily	<i>Erythronium americanum</i>
Black cherry	<i>Prunus serotina</i>
Canada-mayflower	<i>Maianthemum canadense</i>
Cattails	<i>Typha sp.</i>
Coastal sweet-pepperbush	<i>Clethra alnifolia</i>
Eastern red cedar	<i>Juniperus virginiana</i>
Eastern white oak	<i>Quercus alba</i>
Eastern white pine	<i>Pinus strobus</i>
Grape	<i>Vitis sp.</i>
Gray birch	<i>Betula populifolia</i>
Green alder	<i>Alnus viridis</i>
Greenbrier	<i>Smilax sp.</i>
Highbush blueberry	<i>Vaccinium corymbosum</i>
<b>Japanese knotweed</b>	<b><i>Fallopia japonica</i></b>
Mountain laurel	<i>Kalmia latifolia</i>
<b>Multiflora rose</b>	<b><i>Rosa multiflora</i></b>
Northern red oak	<i>Quercus rubra</i>
<b>Oriental bittersweet</b>	<b><i>Celastrus orbiculatus</i></b>
Paper birch	<i>Betula papyrifera</i>
Princess pine clubmoss	<i>Dendrolycopodium obscurum</i>
<b>Privet</b>	<b><i>Ligustrum sp.</i></b>
Poison-ivy	<i>Toxicodendron radicans</i>
Pussy willow	<i>Salix discolor</i>
Red maple	<i>Acer rubrum</i>
Saltgrass	<i>Distichlis spicata</i>
Saltmarsh hay	<i>Spartina patens</i>
Sedges	<i>Carex spp.</i>
Skunk cabbage	<i>Symplocarpus foetidus</i>
Smooth cordgrass	<i>Spartina alterniflora</i>

**Table 2.** Wildlife observed on the Wesquage Pond refuge on April 18, 2018.

**A. Amphibians**

<u>Common Name</u>	<u>Scientific Name</u>
Spring peeper	<i>Pseudacris crucifer</i>

**B. Birds**

<u>Common Name</u>	<u>Scientific Name</u>
American goldfinch	<i>Spinus tristis</i>
American robin	<i>Turdus migratorius</i>
Black-capped chickadee	<i>Poecile atricapillus</i>



Blue jay	<i>Cyanocitta cristata</i>
Canada goose	<i>Branta canadensis</i>
Carolina wren	<i>Thryothorus ludovicianus</i>
Common grackle	<i>Quiscalus quiscula</i>
Cooper's hawk	<i>Accipiter cooperii</i>
Dark-eyed junco	<i>Junco hyemalis</i>
Double-crested cormorant	<i>Phalacrocorax auritus</i>
Eastern phoebe	<i>Sayornis phoebe</i>
Fish crow	<i>Corvus ossifragus</i>
Great black-backed gull	<i>Larus marinus</i>
Great egret	<i>Ardea alba</i>
Herring gull	<i>Larus argentatus</i>
House finch	<i>Haemorhous mexicanus</i>
<b>House sparrow</b>	<b><i>Passer domesticus</i></b>
Mourning dove	<i>Zenaida macroura</i>
Northern cardinal	<i>Cardinalis cardinalis</i>
Red-winged blackbird	<i>Agelaius phoeniceus</i>
Ring-necked duck	<i>Aythya collaris</i>
Song sparrow	<i>Melospiza melodia</i>
Tufted titmouse	<i>Baeolophus bicolor</i>
White-breasted nuthatch	<i>Sitta carolinensis</i>
White-throated sparrow	<i>Zonotrichia albicollis</i>

## B. Mammals

<u>Common Name</u>	<u>Scientific Name</u>
Cottontail rabbit	<i>Sylvilagus sp.</i>
Eastern gray squirrel	<i>Sciurus carolinensis</i>
White-tailed deer	<i>Odocoileus virginianus</i>

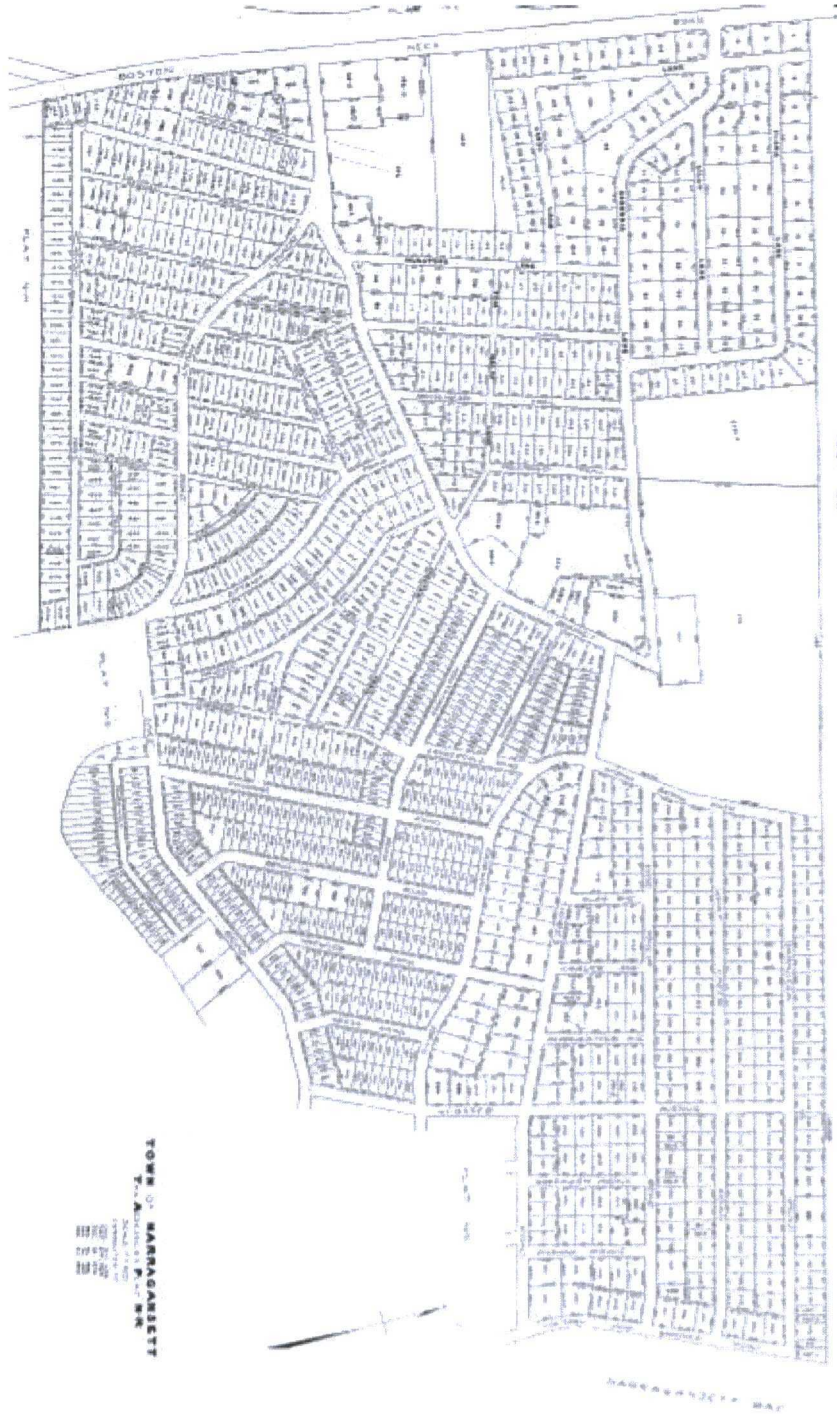
**Figure 1A**  
**Town of Narragansett Tax Assessor's Map**  
**Plat N-R**



Wesquage

Pond

Figure 1B



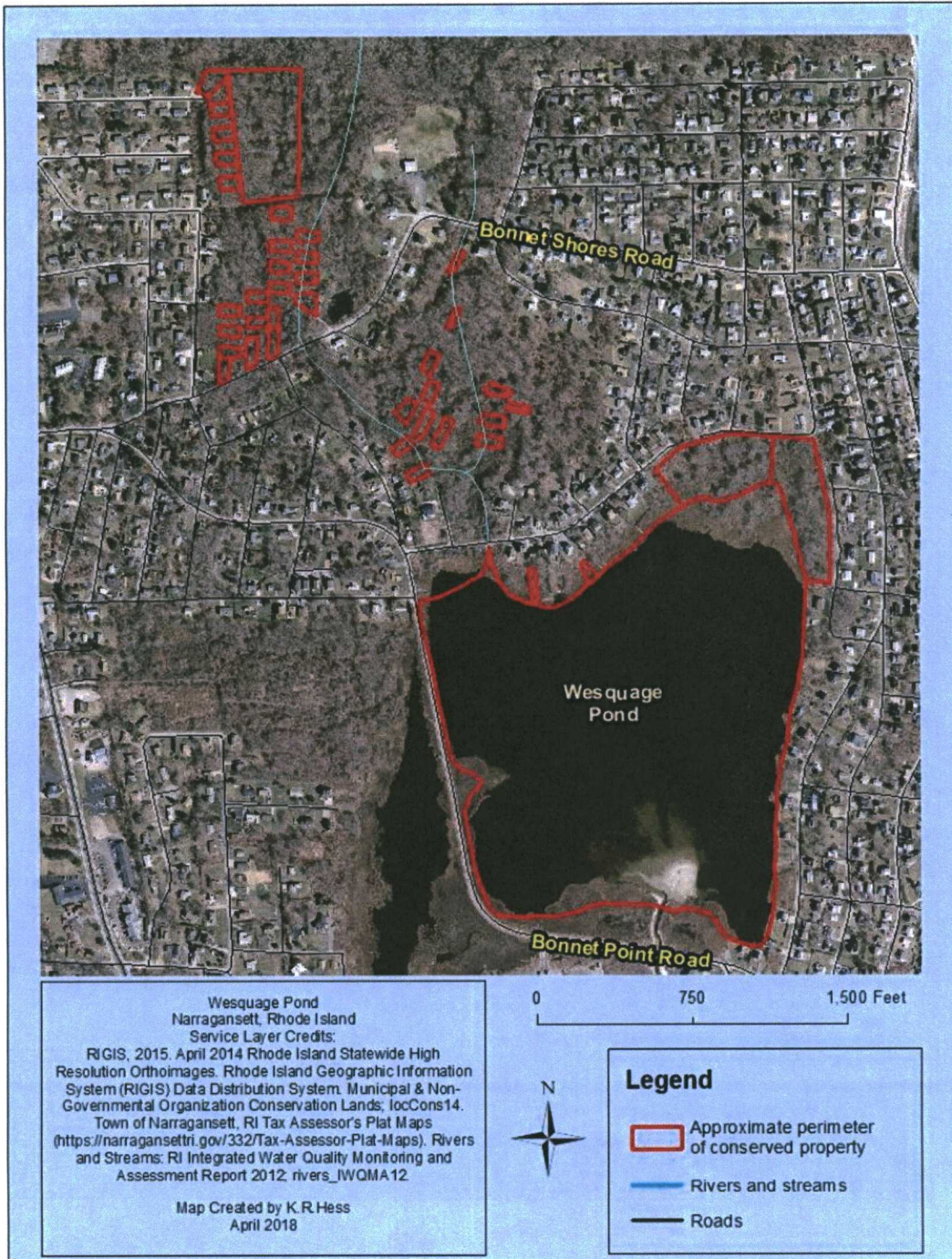
**Town of Narragansett Tax Assessor's Map  
Plat N-S  
Wesquage Pond**



**Figure 2**



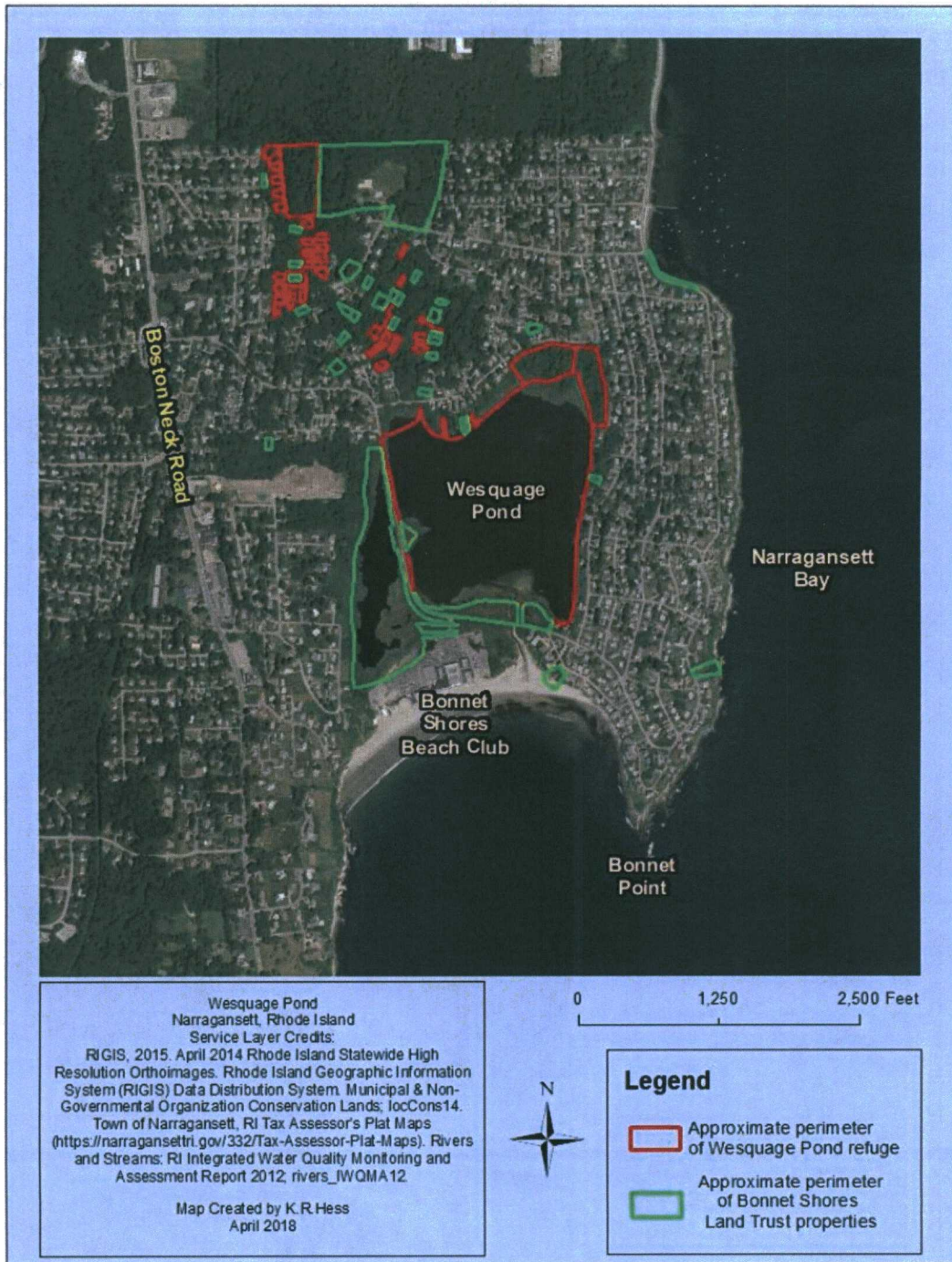
**Aerial Photo / Property Map  
Wesquage Pond  
Narragansett, Rhode Island**



**Figure 3  
Landscape Context Map  
Wesquage Pond**



# Narragansett, Rhode Island



**Figure 4**  
**USGS Topo Map**  
**Wesquage Pond**



Narragansett, Rhode Island

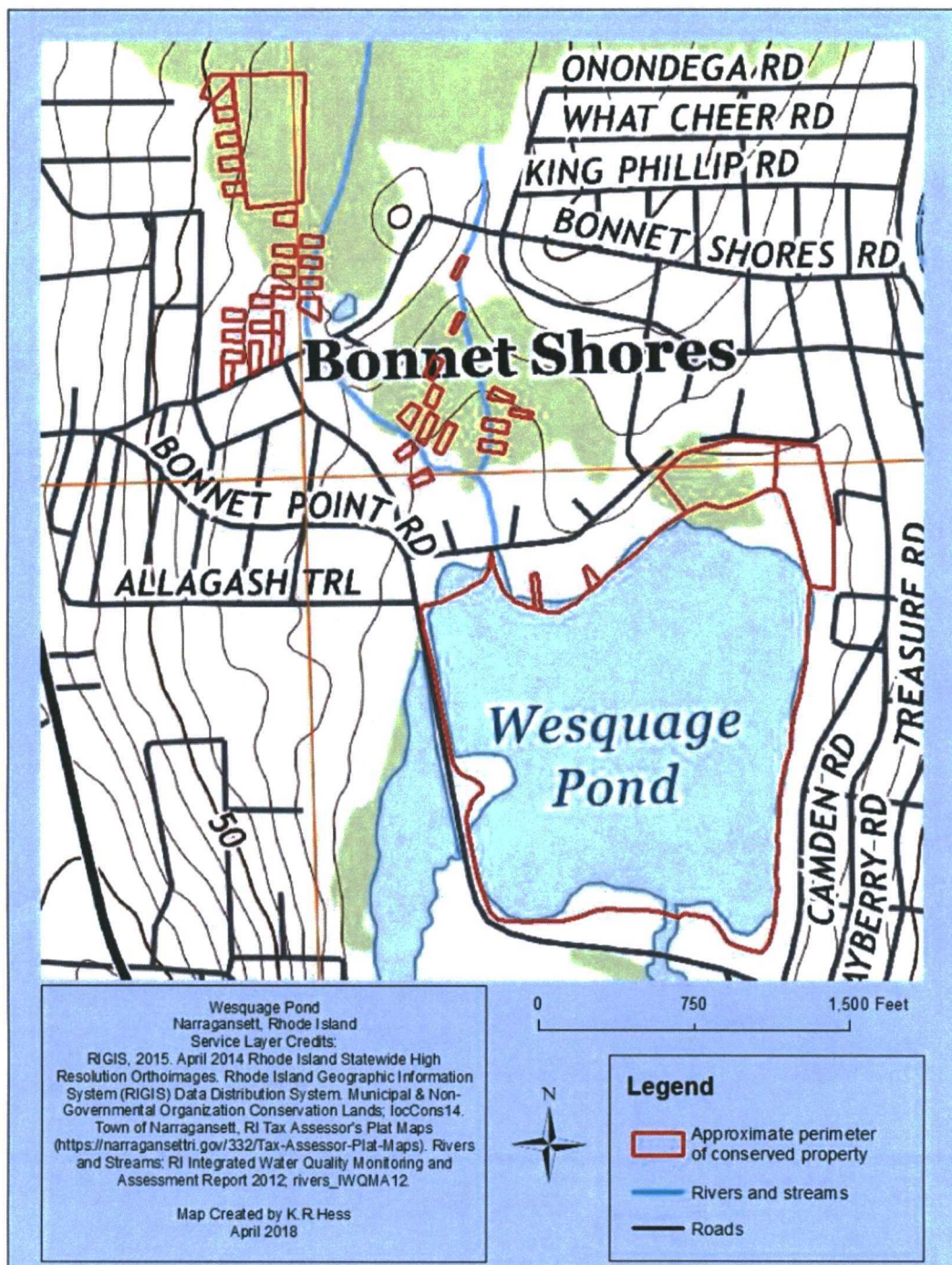
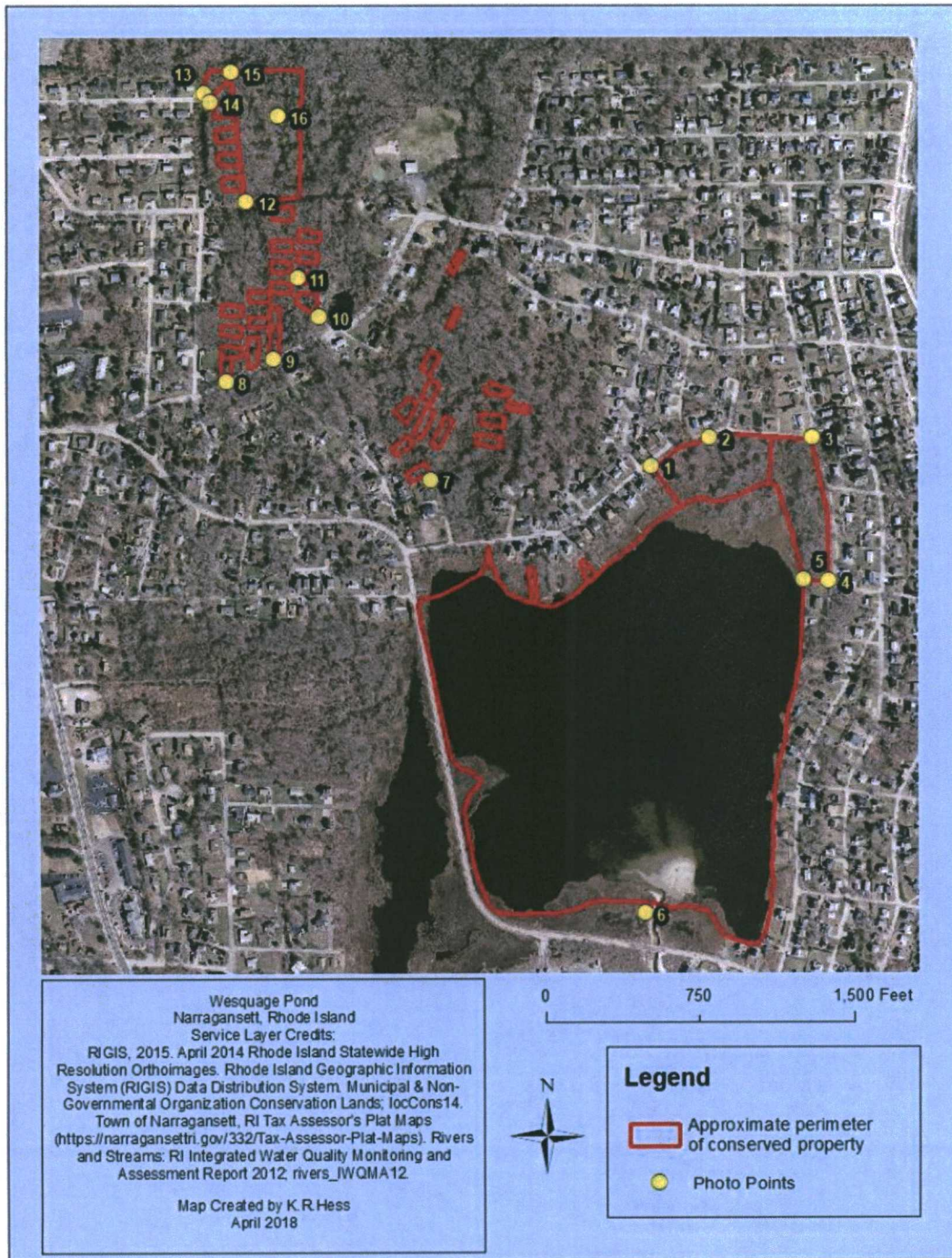


Figure 5  
Photo Points Map  
Wesquage Pond



# Narragansett, Rhode Island



## CURRENT CONDITION REPORT

**Photographs  
Wesquage Pond  
Narragansett, Rhode Island**



**Photo 1A**  
Looking SE along lot boundary from photo point 1  
Photographed by Kyle R. Hess  
Narragansett, Rhode Island, 18 April 2018





**Photo 1B**

Looking NE along lot boundary/Lake Road from photo point 1

Photographed by Kyle R. Hess

Narragansett, Rhode Island, 18 April 2018



**Photo 2**

Looking SSE at cut trail from photo point 2

Photographed by Kyle R. Hess

Narragansett, Rhode Island, 18 April 2018



**Photo 3A**

Looking SSE along lot boundary from photo point 3  
Photographed by Kyle R. Hess  
Narragansett, Rhode Island, 18 April 2018



**Photo 3B**

Looking W along lot boundary/Lake Road from photo point 3  
Photographed by Kyle R. Hess  
Narragansett, Rhode Island, 18 April 2018





**Photo 4A**

Looking W along lot boundary from photo point 4  
Photographed by Kyle R. Hess  
Narragansett, Rhode Island, 18 April 2018



**Photo 4B**

Looking N along lot boundary/Wolfe Road from photo point 4  
Photographed by Kyle R. Hess  
Narragansett, Rhode Island, 18 April 2018



**Photo 5A**

Looking N along lot boundary/pond from photo point 5

Photographed by Kyle R. Hess

Narragansett, Rhode Island, 18 April 2018



**Photo 5B**

Looking E along lot boundary from photo point 5

Photographed by Kyle R. Hess

Narragansett, Rhode Island, 18 April 2018





**Photo 6A**

Looking W along S boundary from photo point 6  
Photographed by Kyle R. Hess  
Narragansett, Rhode Island, 18 April 2018



**Photo 6B**

Looking E along S boundary from photo point 6  
Photographed by Kyle R. Hess  
Narragansett, Rhode Island, 18 April 2018



**Photo 7**

Looking NW at lot from photo point 7  
Photographed by Kyle R. Hess  
Narragansett, Rhode Island, 18 April 2018



**Photo 8**

Looking NNW into lot from photo point 8  
Photographed by Kyle R. Hess  
Narragansett, Rhode Island, 18 April 2018





**Photo 9**

Looking N at lot from photo point 9  
Photographed by Kyle R. Hess  
Narragansett, Rhode Island, 18 April 2018



**Photo 10**

Looking NW at lot from photo point 10  
Photographed by Kyle R. Hess  
Narragansett, Rhode Island, 18 April 2018



**Photo 11**

Looking E into lot from photo point 11  
Photographed by Kyle R. Hess  
Narragansett, Rhode Island, 18 April 2018



**Photo 12**

Looking N along lot boundary from photo point 12  
Photographed by Kyle R. Hess  
Narragansett, Rhode Island, 18 April 2018





**Photo 13**

Looking NE into lot from photo point 13  
Photographed by Kyle R. Hess  
Narragansett, Rhode Island, 18 April 2018



**Photo 14**

Looking E into lot from photo point 14  
Photographed by Kyle R. Hess  
Narragansett, Rhode Island, 18 April 2018





**Photo 15A**

Looking S along lot boundary/stone wall from photo point 15  
Photographed by Kyle R. Hess  
Narragansett, Rhode Island, 18 April 2018



**Photo 15B**

Looking W along lot boundary/stone wall from photo point 15  
Photographed by Kyle R. Hess  
Narragansett, Rhode Island, 18 April 2018



**Photo 16**

Looking E into lot from photo point 16/E most accessible point in lot

Photographed by Kyle R. Hess

Narragansett, Rhode Island, 18 April 2018